

Industrial/Flex Space

4816 S Ash Ave, Suite 101, Tempe, AZ 85282



Space Available
6,300 SF



Rental Rate
\$1.10/SF Gross



Lease Expires
March 31, 2026

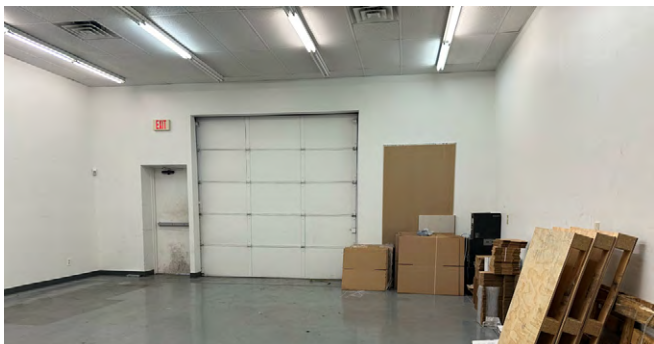


Location
Tempe



Property Overview

4816 S ASH AVE | [SUBLEASE](#)



DETAILS



6 Private Offices



1 Conference Room



1 Break Room



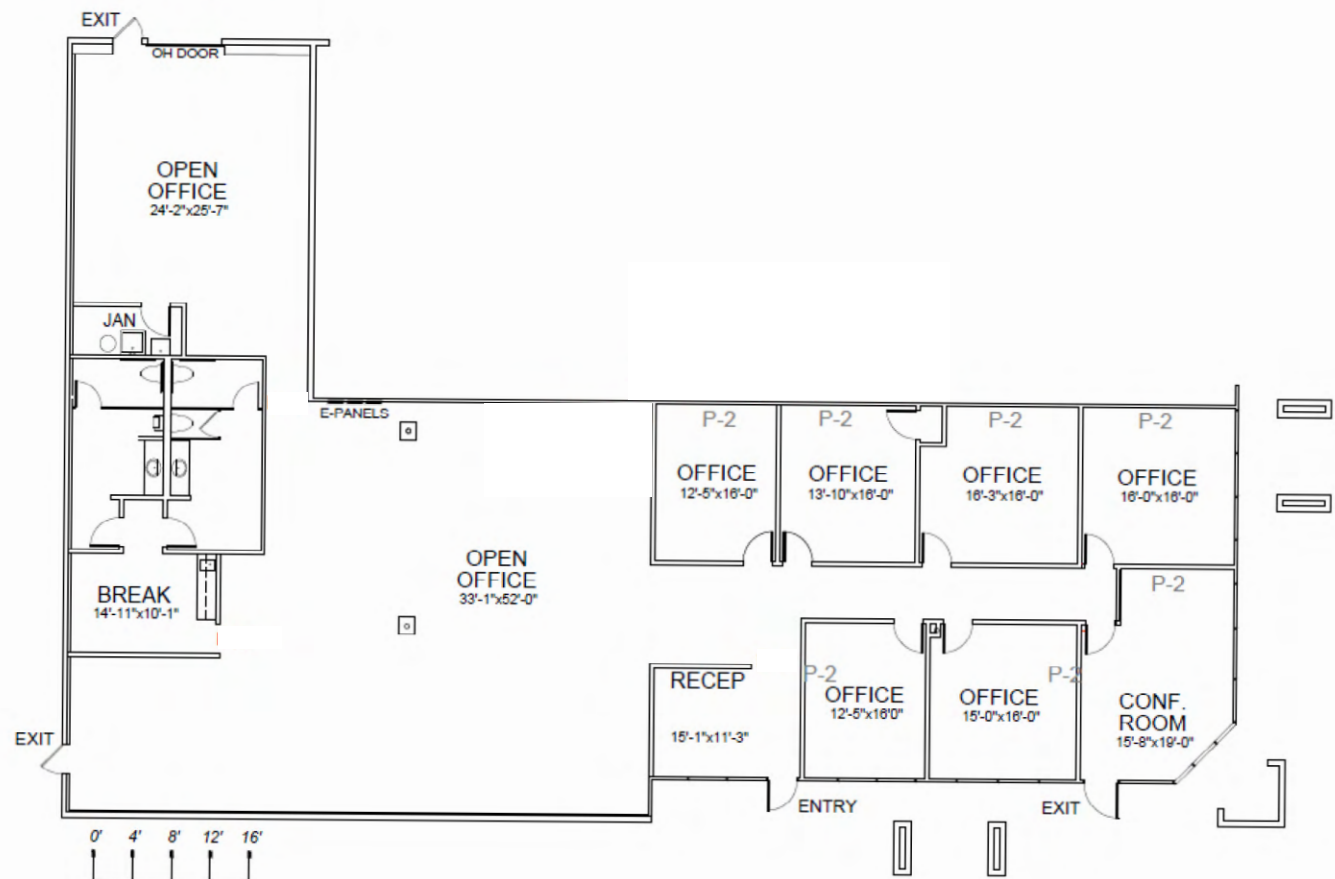
100% HVAC



1 grade level door (10' x 10')

Floor Plan

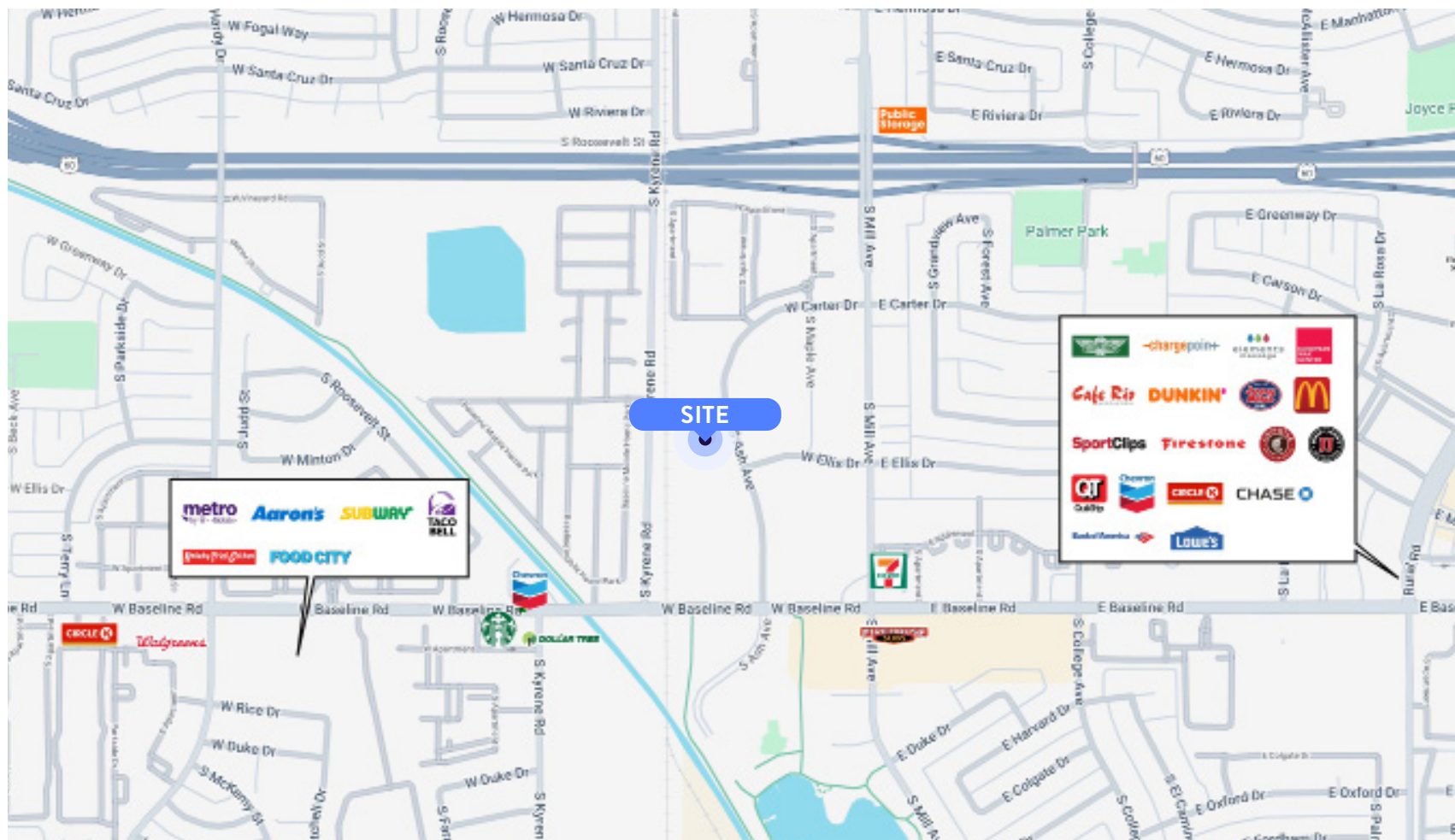
4816 S ASH AVE | [SUBLEASE](#)



STE 101

Map

4816 S ASH AVE | **SUBLEASE**



CONTACT

BRANDON BORSHEIM

bborsheim@keyser.com

602.326.1861



Thank You

Keyser | Commercial Real Estate Advocates | Keyser.com